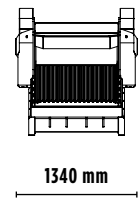
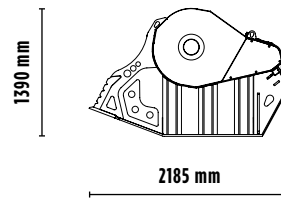
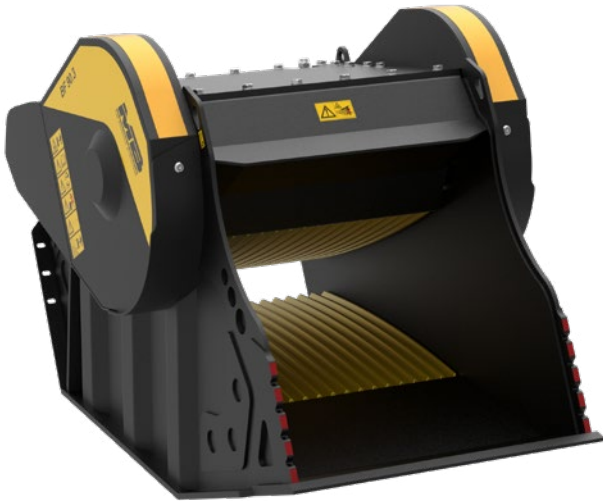


# BF 90.3 S4




## ACCESSORIES

- RECOMMENDED SPARE PARTS KIT
- FIXED COUPLING
- IRON SEPARATOR
- HOUR METER
- DUST SUPPRESSION KIT
- 24 MONTHS WARRANTY



## SPECIFICATIONS

EQUIPMENT	 $\geq 21 \leq 32$ Ton
LOAD CAPACITY	0,90 m <sup>3</sup>
OPENING DIMENSIONS	L 910 H 540 mm
OUTPUT SETTING	$\geq 15 \leq 140$ mm
DIMENSIONS	2185 x 1340 H 1390 mm
OIL FLOW	$> 180 < 240$ l/min.
PRESSURE	$> 220$ bar
WEIGHT	3,50 Ton

## AREAS OF APPLICATION



RECYCLING



URBAN  
JOB SITES



ROAD WORKS



DEMOLITION



EXCAVATION



QUARRIES  
AND MINES



FOUNDRY



TUNNELS  
AND ENCLOSED  
SPACES

The data provided above is not binding, as the manufacturer reserves itself the right to make improvements to its products at any time and with no advance notice. References to excavator weights are approximate and many may be subject to changes.

Rev. 2020 / 07



WWW.MBCRUSHER.COM